

Bio - Input Resource Centres (BRCs)

An Enterprise Support System
for scaling up of Natural Farming



Watershed Support Services and Activities Network (WASSAN)
National Coalition for Natural Farming (NCNF)



...Why should
one go for Natural Farming
What are the benefits?...

Hi,
I am Bhanuda,
I understand Natural Farming as a
process of shifting towards a more Local,
Resilient & Adaptive Agroecology based Farming



“...I practice **NATURAL FARMING**
because of its many benefits...”



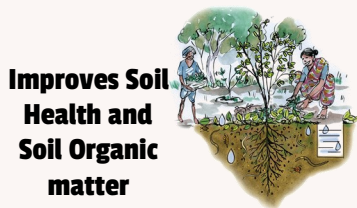
Conserve Water



More Biodiversity on Farm



**Safe and Nutritious Food with
no chemical residues**



**Improves Soil
Health and
Soil Organic
matter**



**Withstanding
adversities—
changing climate,
rainfall variations
and pest attacks**

“...Apart from all the above, it also gives better net income...”

**To practice
NATURAL FARMING,
We have to understand...**



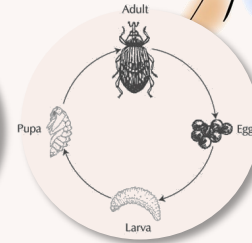
Soil Biology



Crop Systems



Crop Nutrition



Pest Life Cycle



**Timely Management of
Pests and Diseases**

Plant Growth

**Natural Farming practices
requires several Bio-inputs like these...!!**

Diverse Seeds of Diverse Crops

**Seed
Treatment**



**Drava / Ghana
Jeevamrutham /
Panchagavya**

Beejamrutham

Panchagavya

**Neem seed kernel
extract**

Dashaparni

**Pest Management
with inputs & traps**

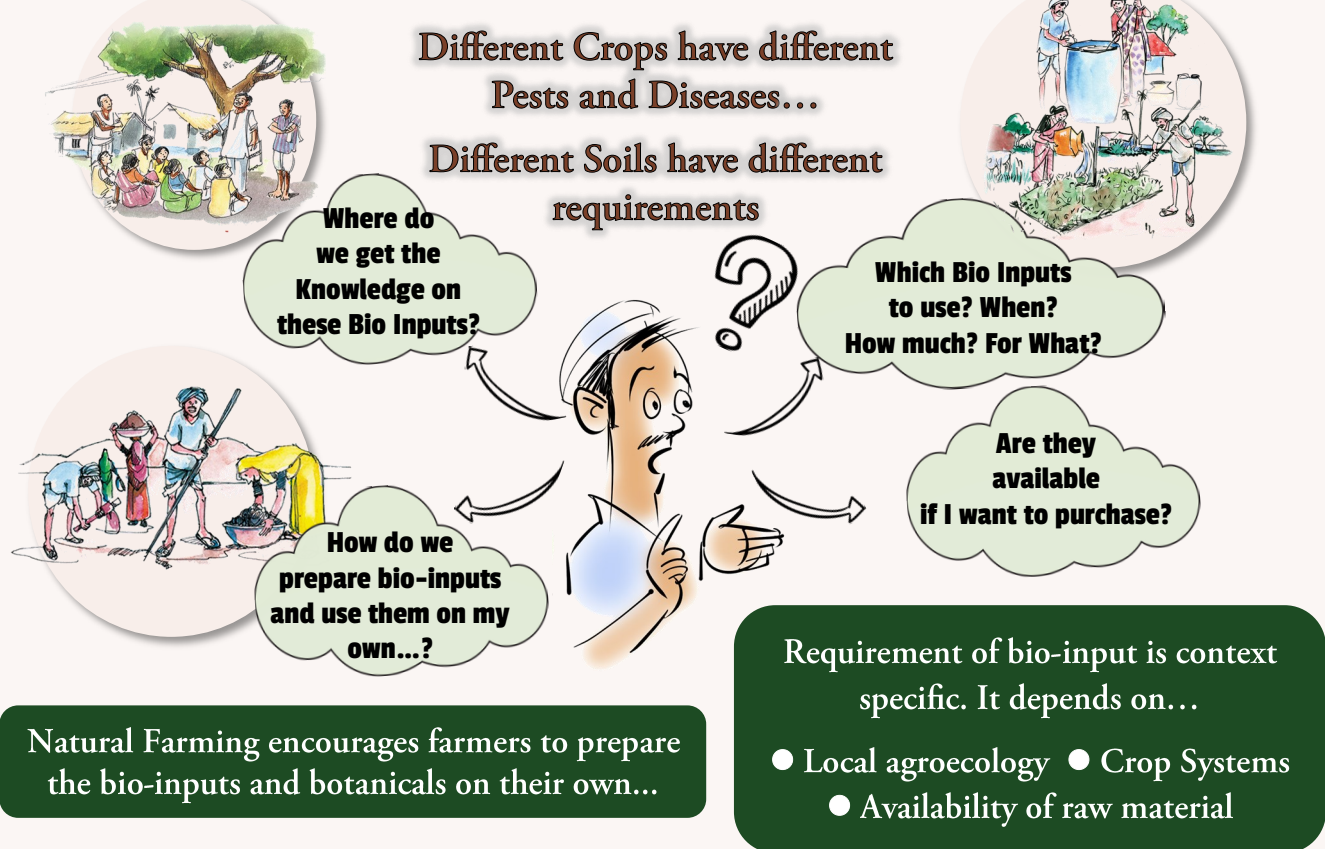
**Seeds for Pre-Monsoon Dry Sowing (PMDS) / Crop
Diversification / Poly Crops / Traps Crops**

Sticky / Fly Traps



**Some microbial
agents**

**Trichoderma /
Pseudomonas, Etc.**



KEY CHALLENGES IN TERMS OF BIO-INPUTS

- Limited access to bio-inputs



- Labour intensive and time consuming



- Limited availability of raw materials



BIO-INPUTS RESOURCE CENTRES

A viable solution for such dilemmas and challenges

It has evolved from the experiences of several innovative entrepreneurial farmers and initiatives of several CSOs / KVKs across the country.

WHAT ARE THESE BIO-INPUT RESOURCE CENTRES?

Several entrepreneurial farmers have open small shops called **BIO-INPUT CENTRE (BRC)** with initiative and support from KVKs and NGOs. These centres prepare and sell bio-inputs at villages, gram panchayats, and block levels.



Who can establish Bio-input Resource Centres (BRCs)?

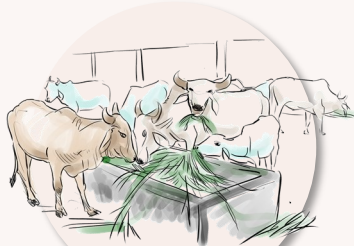


Self Help Groups (SHGs)

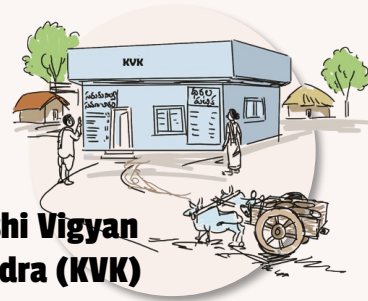
A BRC can be set up by anybody



Farmer Producer Organisation (FPO)



Gaushala



Krishi Vigyan Kendra (KVK)

BRCs can be set up by anyone; but it needs to be run on an enterprise / business mode

What are these Bio-Input Resource Centres (BRCs)



Services offered by BRCs...



PRODUCTION AND MARKETING

Unbranded, locally prepared bio-inputs suitable to the local crops systems, lures and traps etc.

TRAINING SUPPORT

Handholding farmers in preparing bio-inputs at their end and their usage.

KNOWLEDGE SHARING

Practices to improve soil health, plant growth and manage disease and pests.

BIO-INPUT RESOURCE

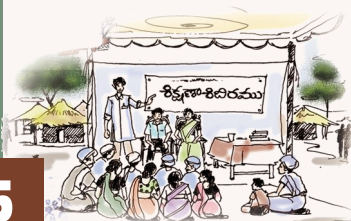
CENTRE (BRC) are enterprises that sell unbranded and locally prepared bio-inputs that are specific to the local crop systems.

They are meant for purchase by farmers who find it difficult to prepare these inputs by themselves.

BUSINESS VIABILITY OF A BRC

Sizeable market demand is essential for the viability of BRC

- Demand for bio-inputs depends on the type of crops, spread of natural farming practices, among other factors. Vegetable crops, horticulture, cotton and chillies may have higher demand for bio-inputs.



- It is advisable to start BRC in a Cluster of Gram Panchayats; More BRCs can be prepared as the demand increases.

- Some of the BRC products have low shelf life, so matching demand is important. Starting in a cluster is important to avoid storage of products having short life period.



An Ideal BRC Entrepreneur will be



- **PRACTICING NATURAL FARMING** with 2-5 years of experience
- **IS ANCHORED** by an SHG, FPO, NGO or Gaushala and run by an entrepreneur
- **FINANCIALLY CAPABLE** to share the costs of setting up the BRC
- **HAVE ACCESS TO RAW MATERIALS**—plants, cattle by-products, etc.



- **HAS THE ABILITY FOR EXTENSION OF NATURAL FARMING** amongst farmers to cross learn.
- **DEMONSTRATES NATURAL FARMING PRACTICES** to nearby villages

Ideally BRC can be a family enterprise, generating supplementary income;; the business is highly seasonal and may not support full-time employment, in the initial period.

What are the requirements for setting up of a BRC?

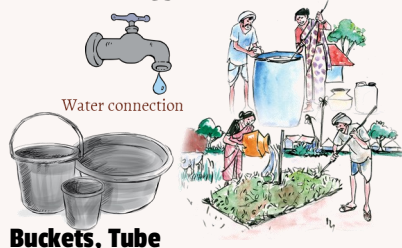


It needs an experienced knowledgeable entrepreneur, investment, infrastructure and technical support!!

CRITICAL REQUIREMENT FOR BRC...

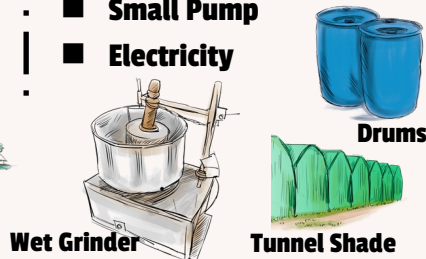
To Start with...

- Access to animal urine, dung (preferably desi cow)
- Drums and Cans
- Wood Stove
- Bucket and Tube
- Chopping and Grinding Knives



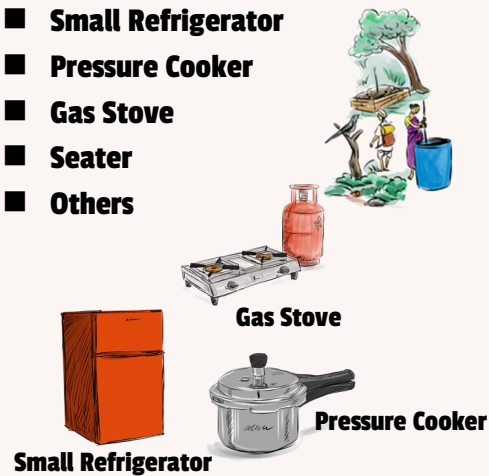
As it Scales Up...

- More drums
- Automation for high volume inputs
- Automated Drava Jeevamrutham unit (DJ)
- Wet Grinder
- Mixer for Chopping
- Small Pump
- Electricity



To increase range of products

- Multiplication of Microbial formulations
- Small Refrigerator
- Pressure Cooker
- Gas Stove
- Seater
- Others



- Water supply to the unit minimum 2,000 sq.ft of space
- Abundant availability of raw materials
- Knowledge of the BRC



... BRC starts with simple products and expands the product range as the knowledge and demand improves...

Simple Start

GROWTH STIMULANTS

- Beejamrutham
- Ghana Jeevamrutham
- Drava Jeevamrutham
- Panchagavya
- Waste Decomposer
- Others

PEST & DISEASE CONTROL

- Neem Kernel Extraction
- Dashaparni
- Chilli Garlic Extract
- Other Products



Scales up

- Larger Automated Fermentation Unit (e.g. DJ Unit)
- Production of higher quantities



Include Microbial Products

- Multiplication of Microbial formulations
- Trichoderma
- Pseudomonas



Verticillium



Beauveria



Lecanil



Chilli, Garlic

What sort of support ecosystem is required for establishing a BRC

BRC should be nurtured for at least 3 years to be successful...!



NGOs



SHGs



KVKs



FPOs



Gaushala

Increasing awareness about natural farming



Extending credit and incubation support for entrepreneurs



Providing quality trainings with demonstration to the community members



Support is needed for all these things??

Increasing access to and availability of biomass through plantation



Demand generation and market development at village, gram panchayat and cluster levels



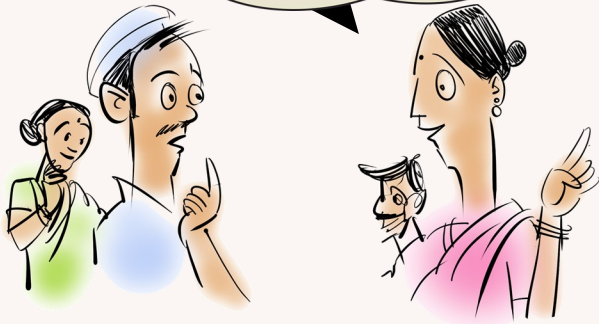
Enabling access to consistent technical knowledge and handholding support



Ensuring quality assurance mechanism within the community



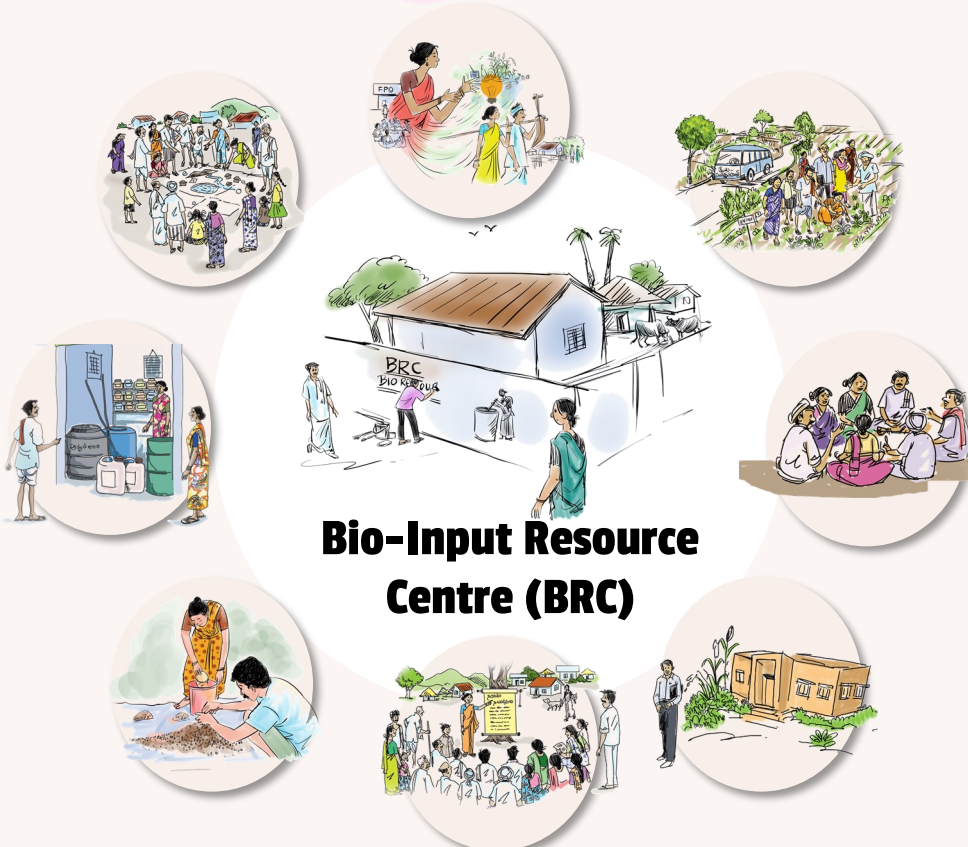
Providing Life to Soils,
Crops and Farmers' Livelihoods
through all these!!



- Knowledge Sharing on Natural Farming Processes

- Unbranded Locally Prepared Bio-inputs and Botanical Formulations

- Income Generation through Enterprising Opportunities



Bio-Input Resource Centre (BRC)

Bio - Input Resource Centres (BRCs)

An Enterprise Support System
for scaling up of Natural Farming



For Information, please contact

NATIONAL COALITION FOR NATURAL FARMING (NCF)

C/o Watershed Support Services and Activities Network (WASSAN)

Plot No. 685, Street No. 12, Narasimha Swamy Colony, Nagole, Hyderabad—500 068

✉ secretariat@nfcoalition.in | 🌐 www.nfcoalition.in | www.wassan.org

For support promoting BRCs, please contact **Mr. Sandeep CS**, ✉ brc@nfcoalition.in



Supported by



**AGROECOLOGY
FUND**